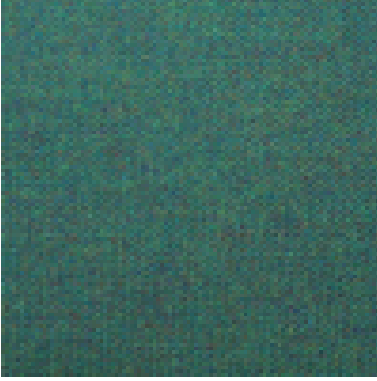
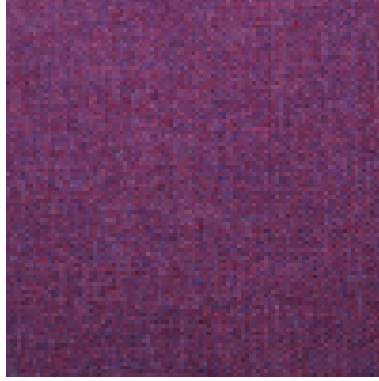


Stirling

Aegean
P057



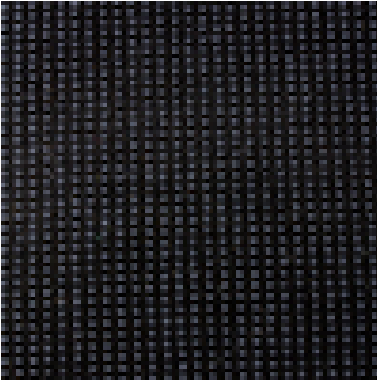
Amethyst
P069



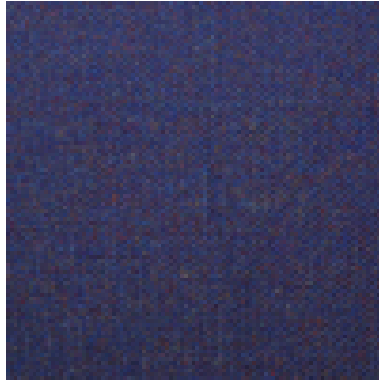
Aqua
P080



Argent
P502



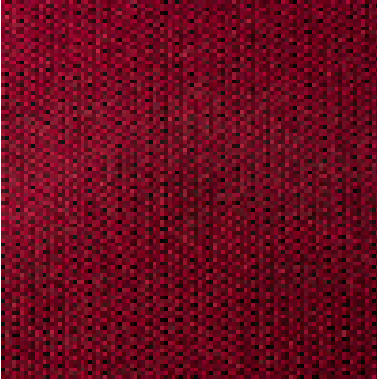
Atlantic
P056



Black
P076



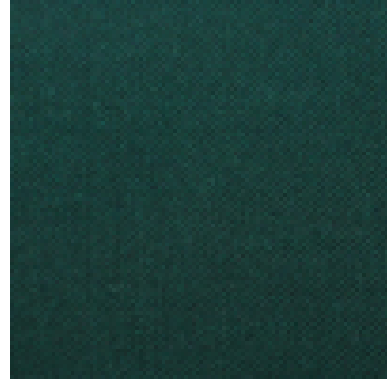
Blackberry
P504



Bluebell
P038



Bottle Green
P095



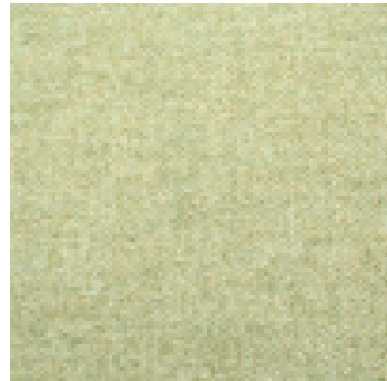
Charcoal
P045



Cherry
P036



Chive
P097



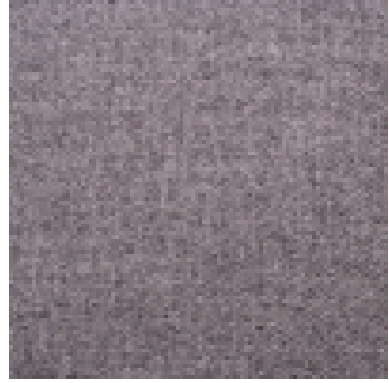
Cinnamon
P048



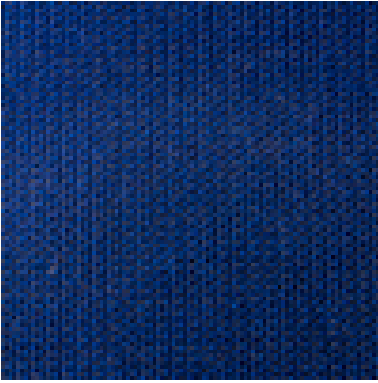
Claret
P055



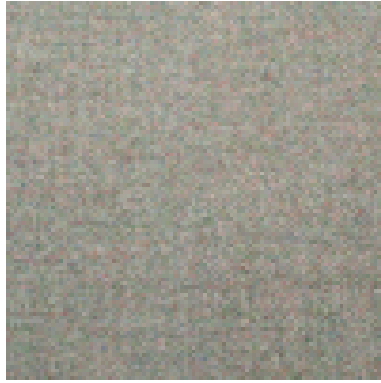
Cloud
P031



Cobalt
P503



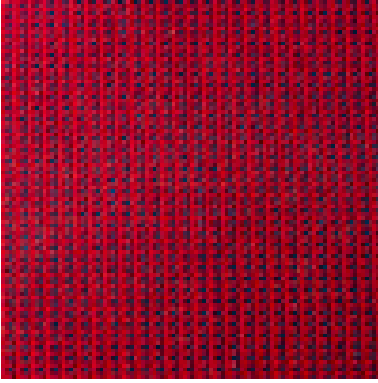
Crystal
P096



Damson
P063



Dandy
P500



Emerald
P090



Flint
P044



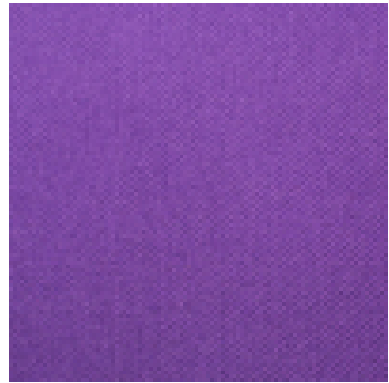
Garnet
P102



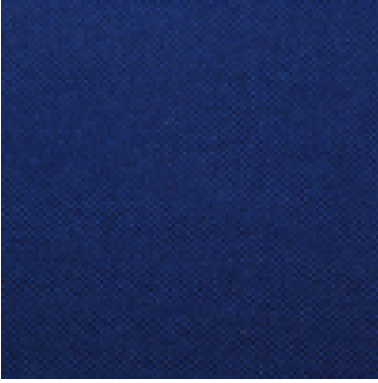
Heather
P083



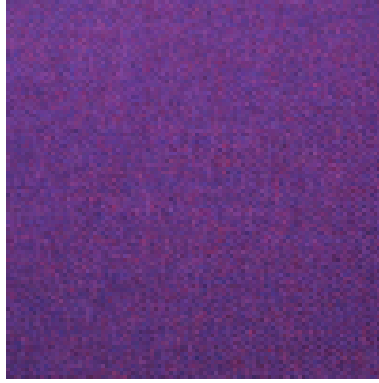
Hemlock
P099



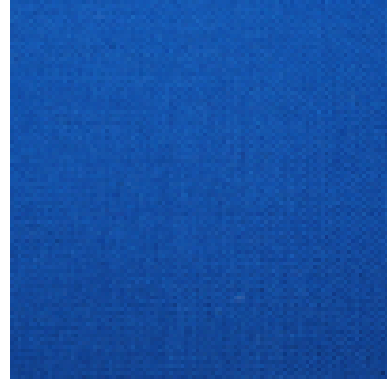
Indigo
P091



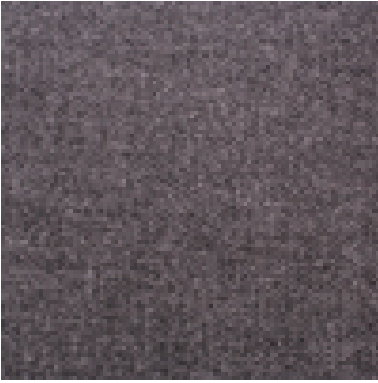
Iris
P077



Lagoon
P088



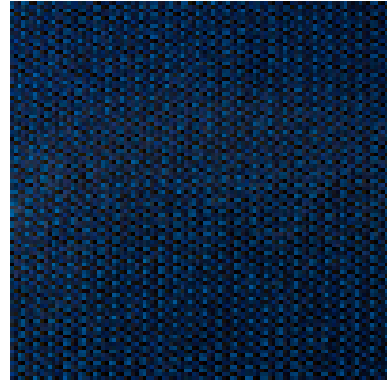
Lead
P043



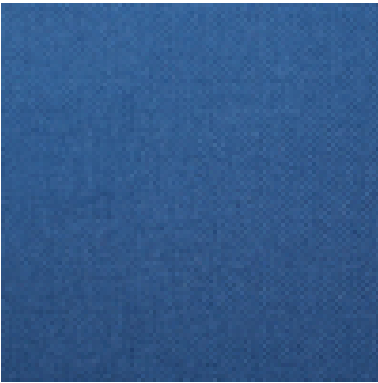
Magenta
P059



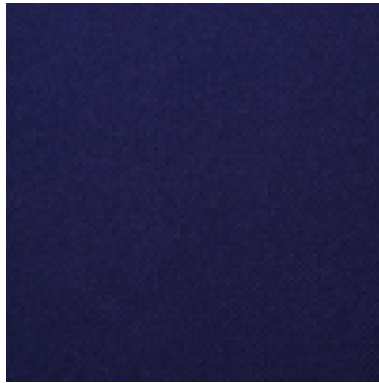
Marine
P501



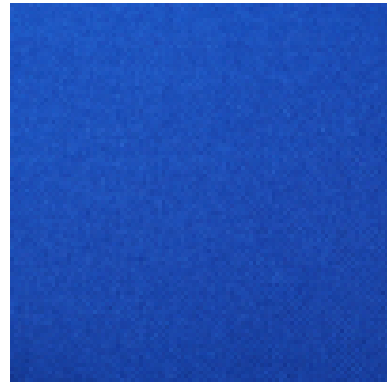
Moonshadow
P089



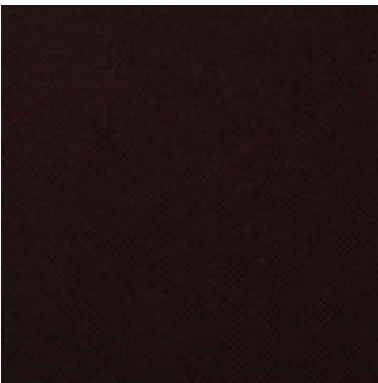
Navy
P050



Ocean
P072



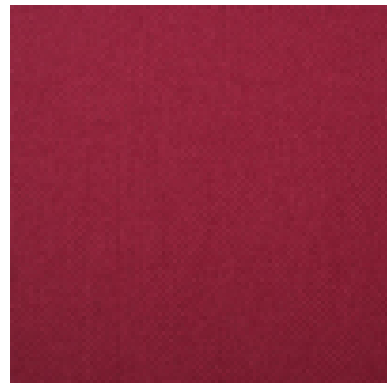
Peat
P001



Phantom
P034



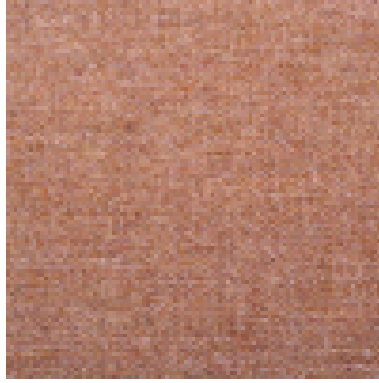
Plum
P052



Royal
P041



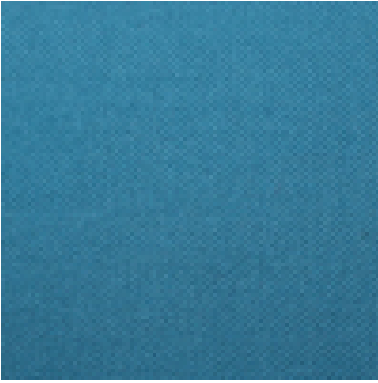
Sand
P066



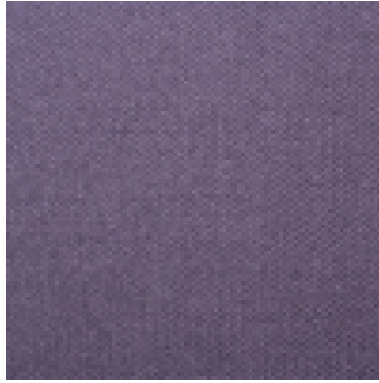
Sandstone
P104



Seaglade
P092



Slate
P075



Strawberry
P051



Wine
P039



Application:

Upholstery fabric

Composition:

70% Polypropylene, 30% wool

Width:

140cm Tolerance $\pm 2\%$

Weight:

385gms/m² Tolerance $\pm 5\%$

Abrasion:

Tested in accordance with BS 5690: 1999 as modified by Annex F of BS 2543: 2004 to 90,000 rubs Martindale.

Meets the requirements of BS 2543: 2004 and has been graded 'SEVERE CONTRACT' suitable for all types of upholstery use.

Flame Retardancy:

BS 7176: 2007 Low Hazard.

BS EN 1021 - 1: 2006 (Cigarette).

BS EN 1021 - 2: 2006 (Match).

Note: Flammability performance is dependant on foam used.

Light Fastness:

5+ (ISO 105 - B02: 1999)

Fastness to Rubbing:

Wet: 4+ Dry: 4+ (ISO 105 - X12:2002)

Colour Matching:

Batch by batch variations in shade may occur within commercial tolerances. We recommend that fabric be examined before use as no claims will be considered after cutting.

Product Development:

We reserve the right to change the specification of our products in line with our product development program without notice.

Fabric Care And Maintenance:

Clean using a proprietary upholstery shampoo. Please refer to our fabric care guide.

Availability:

All our fabrics are generally available ex-stock for immediate despatch.

Technical Assistance:

Our technical staff will be pleased to offer advice on F.R and other matters.

Guarantee:

Fabric guaranteed for 5 years under normal wear and tear. See our Terms and Conditions.