

Product information

Low Hazard commercial seating fabric, Advantage, offers a combination of enduring aesthetic appeal and high performance durability which means it will look good and last for years. Advantage is a plain weave fabric in a rich assortment of colourways in both plains and mixes.

Contact

UK Head Office:	+44 (0)1924 490491
Germany:	+49 7031 60 84 30
Scandinavia:	+45 32 55 20 01
France/Benelux:	+32 56 227 266
USA:	+1 317 484 0305
China:	+ 86 (0) 21 6133 1812

www.camirafabrics.com



Technical information

UK

Composition

60% Polypropylene, 30% Wool,
10% Viscose

Width

130cm minimum

Weight

360g/m² ±5% (470g/lin.m ±5%)

*Abrasion Resistance

5 year guarantee / 90,000 Martindale
cycles (full details available)

Flammability

BS EN 1021 - 1:2006 (cigarette)
BS EN 1021 - 2:2006 (match)
BS 7176:2007 (Low Hazard)

*Note: Flammability performance is
dependent on foam used.*

*Light Fastness

5 (ISO 105 - B02:2013)

*Fastness to Rubbing

Wet: 4, Dry: 4 (ISO 105 - X12:2002)

Cleaning

Vacuum regularly. Wipe clean with a
damp cloth or shampoo using proprietary
upholstery shampoo.

* Tested in accordance with BS EN 14465. Please
note that seam performance is dependent on
seam construction and needle and thread type.
We recommend that appropriate sewing advice
be taken.

Note: Batch to batch variations in shade may
occur within commercial tolerances. We reserve
the right to alter technical specifications without
notice. The Unregistered Design Rights and the
Copyright in all designs are the exclusive property
of Camira Fabrics Limited.

D

Zusammensetzung

60% Polypropylen, 30% Wolle,
10% Viskose

Breite

130cm nutzbare Breite

Gewicht

360g/m² ±5% (470g/ftd.M ±5%)

*Scheuerfestigkeit

5 Jahre Garantie / 90,000 Martindale
Scheuertouren (Details auf Anfrage)

Feuersicherung

BS EN 1021 - 1:2006 (Zigarettestest)
BS EN 1021 - 2:2006 (Streichholztest)
BS 7176:2007 (Low Hazard)

*Bemerkung: Schwerentflammbarkeit hängt
von verwendetem Schaum ab.*

*Lichtechtheit

5 (ISO 105 - B02:2013)

*Reibechtheit

Nass: 4, Trocken: 4 (ISO 105 - X12:2002)

Reinigung

Regelmässig staubsaugen. Dazu mit
einem feuchten Tuch abwischen, oder
mit einem speziellen Polsterschaum
behandeln.

* Wurde nach BS EN 14465 getestet. Eine
optimale Nahtausreissfestigkeit hängt von der
Nahtfahne, der verwendeten Nadel und dem
Näh-Garn ab. Wir empfehlen daher Nähversuche
durchzuführen.

Wichtig: Handelsübliche Farbabweichungen
können auftreten und berechnen nicht zur
Reklamation. Wir behalten uns die Änderung
technischer Spezifikationen vor. Die registrierten
und nicht registrierten Urheberrechte der
Dessinierungen sind ausschliessliches Eigentum
der Camira Fabrics Limited.

F

Composition

60% Polypropylène, 30% Laine,
10% Viscose

Largeur

130cm minimum

Poids

360g/m² ±5% (470g/m.l ±5%)

*Résistance à l'abrasion

Garantie de 5 ans / 90,000 Martindale
tours (renseignements complémentaires
disponibles)

Flammabilité

BS EN 1021 - 1:2006 (cigarette)
BS EN 1021 - 2:2006 (allumette)
BS 7176:2007 (Low Hazard)

*Notez: Réaction au feu dépend de la
mousse utilisée.*

*Solidité à la lumière

5 (ISO 105 - B02:2013)

*Solidité au Frottement

Mouillé: 4, Sec: 4 (ISO 105 - X12:2002)

Nettoyage

Aspirer régulièrement. Essuyer avec
une étoffe humide ou nettoyer à l'aide
d'un produit approprié pour tissus
d'ameublement.

* Testé selon la norme BS EN 14465. Veuillez
noter que la performance du joint dépend de sa
construction ainsi que de l'aiguille et du type de
fil utilisés.

Remarque: une variation de couleurs peut
provenir (commerciallement tolérable). Nous
réserveons le droit de changer les spécifications
techniques sans préavis. Les Droits de Conception
non-enregistrés et les droits d'auteur de tous les
motifs sont la propriété exclusive de Camira
Fabrics Limited.

ES

Composición

60% Polipropileno, 30% Lana,
10% Viscosa

Ancho

130cm mínimo

Peso

360g/m² ±5% (470g/lin.m ±5%)

*Resistencia a la abrasión

Garantía de uso 5 años / 90,000
Martindale ciclos (más información
disponible bajo consulta)

Inflamabilidad

BS EN 1021 - 1:2006 (cigarillo)
BS EN 1021 - 2:2006 (cerilla)
BS 7176:2007 (Low Hazard)

*Condiciones ignífugas dependientes del
tipo de foam utilizado.*

*Solidez a la luz

5 (ISO 105 - B02:2013)

*Solidez al rozamiento

Húmedo: 4, Seco: 4 (ISO 105 - X12:2002)

Limpieza

Cada tintada puede tener pequeñas
variaciones en el tono dentro de las
tolerancias comerciales aceptadas.

* Probado de acuerdo con la norma BS EN 14465.
Tenga en cuenta que el rendimiento de la costura
depende de la construcción de la costura,
además de la aguja y del tipo de rosca. Le
recomendamos que se aconsejen para coser la
costura.

Nota: las variaciones de lote a lote en la
sombra se puede producir dentro de tolerancias
comerciales. Nos reservamos el derecho a
efectuar modificaciones técnicas sin previo aviso.
Los derechos sobre los diseños no registrados y
los derechos de autor en todos los diseños son
propiedad exclusiva de Camira Fabrics Limited.

camira

style with substance

www.camirafabrics.com

Advantage



Task seating



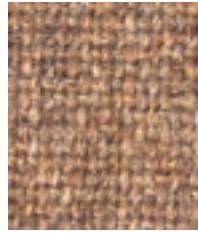
Cigarette & Match



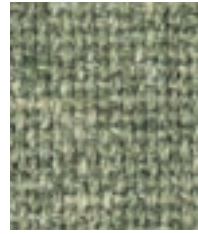
Year guarantee



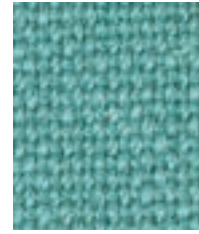
Cinnamon
AD111



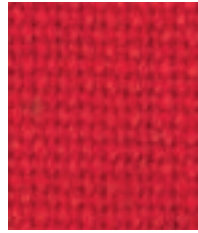
Sandvale
AD016



Leaf
AD030



Kingfisher
AD122



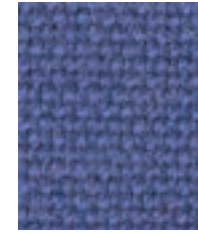
Red
AD014



Tawny
AD098



Shamrock
AD121



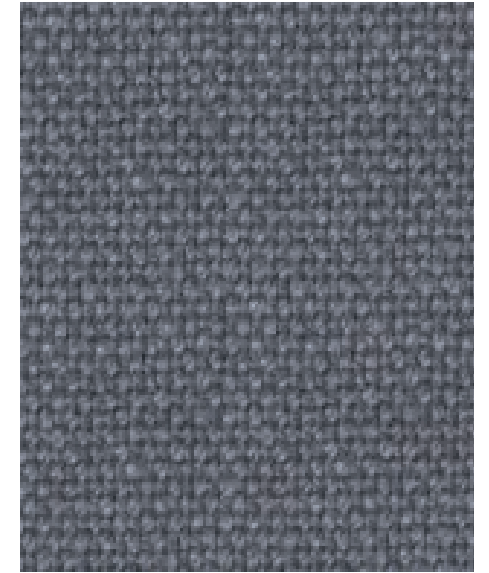
Adriatic
AD001



Trent
AD214



Sea Blue
AD017



Granite
AD009



Cranberry
AD005



Oasis
AD117



Turquoise
AD027



Hobbit
AD213



Pewter
AD072



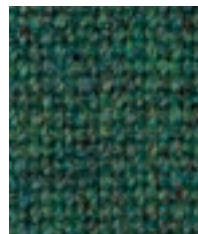
Mineral
AD010



Wine
AD020



Aqua
AD002



Persian
AD101



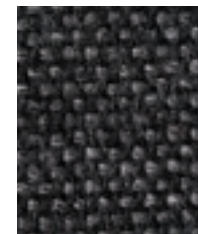
Riviera
AD123



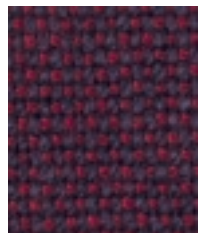
Largo
AD112



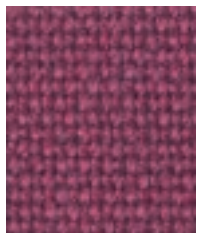
Purple
AD118



Graphite
AD066



Damson
AD093



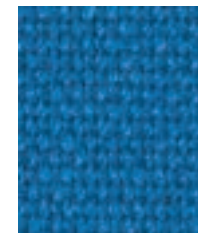
Raspberry
AD127



Teal
AD120



Delta Blue
AD026



Clipper
AD126



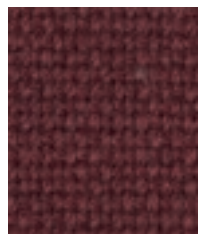
Fjord
AD125



Beetroot
AD116



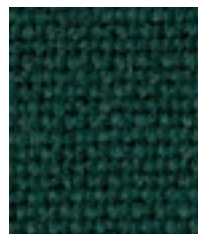
Charcoal
AD028



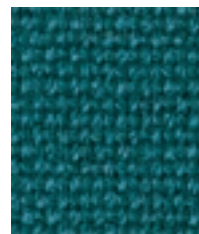
Fox
AD119



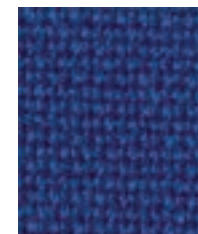
Grape
AD029



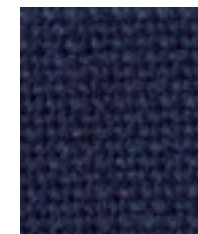
Aztec
AD113



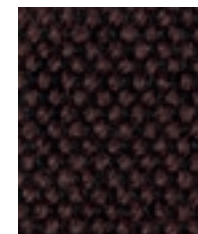
Trident
AD124



Cobalt
AD004



Nightshade
AD011



Peat
AD131



Black
AD055